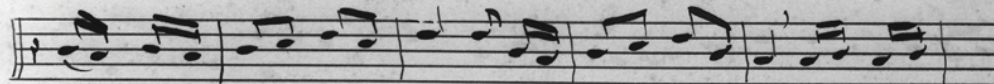
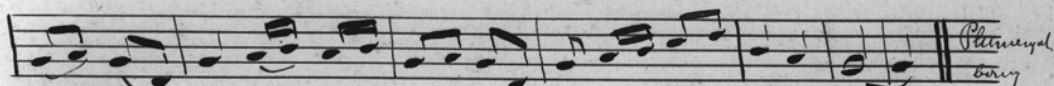


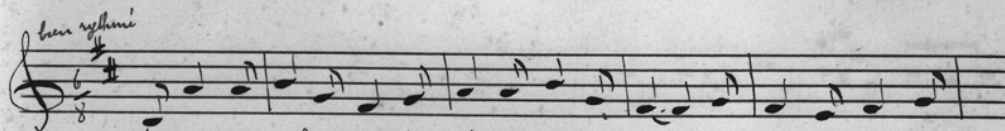
Chi-level ur sonen pleasant sauel ay en ivrogn quant - Chi-level :



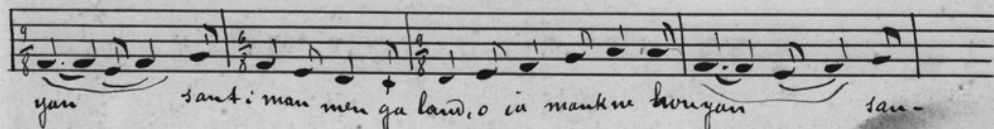
ne - ré n'en doi ket kin sou - si m'it-moret d'en hoste - le - ri ri-ge - ri - ga -



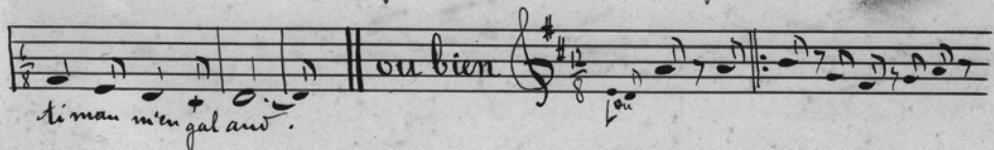
ra lon - la na peh ur uechet e'ho - na foudera ra ra lon - la .



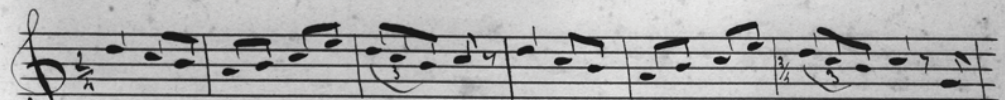
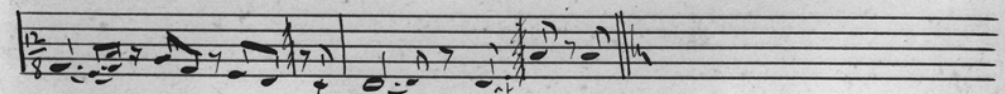
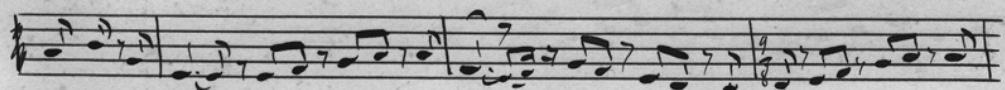
Muyen p'ou e hra dein kale tan ma kavon , o ia , mant ne hori -



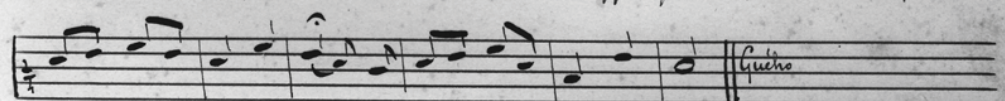
yan sant : man men gal an , o ia mant ne hori yan san -



ti man men gal an .



Mi' hori suppli panted kamor , o , me hori suppli panted ka - mor . o , mi



hor suppli panted kamor dit ket d'or panted de Guého